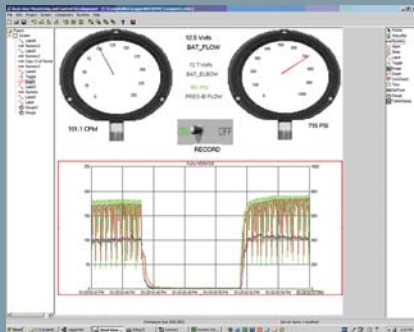




Compaction Grout Monitor



Screenshot of Real-time Monitoring Software

The RST Compaction Grout Monitor System provides operators and engineers real-time display of key grouting parameters to enhance the understanding of site conditions.

It is invaluable in providing a permanent record of key grouting parameters for quality assurance, quantity documentation, pressure and flow readings.

The RST Compaction Grout Monitor System has been developed and tested for a 2.0 in. flow tube. A short (< 50') header connection of high pressure/low dilation, wire braid reinforced hose is recommended. For low mobility/high pressure applications, wired and wireless header pressure monitoring is available.

flow specifications

ITEM	SPECIFICATION
Flow	0.2 - 5.0 CFS (2.09 - 52.4 GPM)
Temperature	-20°C to 85°C (-4°F to 185°F)
Grout Pipe Sizes	2.0 in.
Materials	Compaction and low mobility grouts
Accuracy	±2% above 0.3 CFS (after on-site calibration)
Pressure Transducer	0 - 1000 PSI 0.25% FSO (other options available)
Output	4 - 20 mA or 0 - 2.5 V
Connector	2.0" heavy duty concrete placement flange

logger specifications

ITEM	SPECIFICATION
Storage	2 MB standard memory
Data File	Comma delimited ASCII data file for post processing
Batch Control	Keypad display to file
Reading Rates	2 to 10 seconds

ordering info

ITEM	PART #
Compaction Grout Monitoring System	ELGL7001



RST Instruments Ltd.

11545 Kingston St.,
Maple Ridge, BC
Canada V2X 0Z5

Telephone: 604 540 1100
Facsimile: 604 540 1005
Toll Free: 1 800 665 5599

info@rstinstruments.com

www.rstinstruments.com

applications

Provide the operator with a real-time display of key grouting parameters to enhance the understanding of site conditions.

Provide a permanent record of key grouting parameters for quality assurance, quantity documentation, pressure and flow readings.

features

Non-invasive

Doppler ultrasonic

display features

Digital flow and analog pressure on monitor.

Near-real-time computer display.

Customizable display and recording options:

- Pressure

- Flow

- Injected Volume

- Site Specific Information

All displays in English or SI units.

system features

No cable - spread spectrum 900 MHz radio to computer base station.

Unattended automatic monitoring if desired.